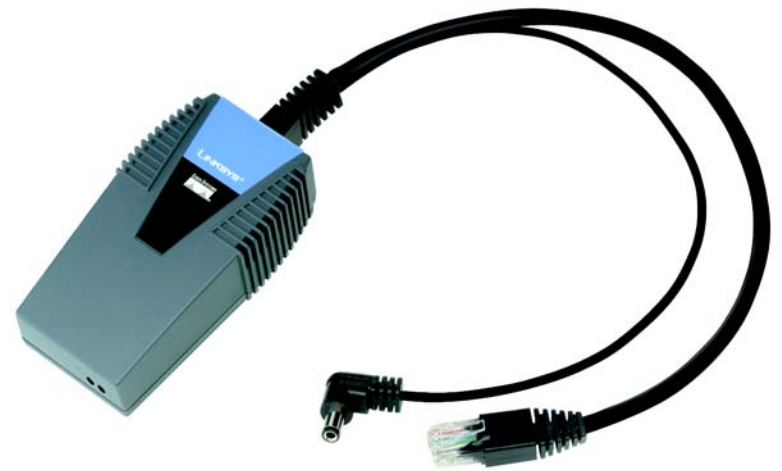


LINKSYS®

A Division of Cisco Systems, Inc.



2,4GHz
802.11g

Wireless-G

Bridge for Phone Adapters

WIRELESS

User Guide

Model No. **WBP54G (EU/LA)**

CISCO SYSTEMS



Copyright and Trademarks

Specifications are subject to change without notice. Linksys is a registered trademark or trademark of Cisco Systems, Inc. and/or its affiliates in the U.S. and certain other countries. Copyright © 2006 Cisco Systems, Inc. All rights reserved. Other brands and product names are trademarks or registered trademarks of their respective holders.

How to Use This User Guide

This User Guide has been designed to make understanding networking with the Wireless-G Bridge for Phone Adapters easier than ever. Look for the following items when reading this User Guide:



This checkmark means there is a note of interest and is something you should pay special attention to while using the Wireless-G Bridge for Phone Adapters.



This exclamation point means there is a caution or warning and is something that could damage your property or the Wireless-G Bridge for Phone Adapters.



This question mark provides you with a reminder about something you might need to do while using the Wireless-G Bridge for Phone Adapters.

In addition to these symbols, there are definitions for technical terms that are presented like this:

word: definition.

Also, each figure (diagram, screenshot, or other image) is provided with a figure number and description, like this:

Figure 0-1: Sample Figure Description

Figure numbers and descriptions can also be found in the “List of Figures” section in the “Table of Contents”.

Table of Contents

Chapter 1: Introduction	1
Welcome	1
What's in This User Guide?	2
Chapter 2: Planning Your Wireless Network	3
Network Topology	3
Roaming	3
Network Layout	4
Chapter 3: Getting to Know the Wireless-G Bridge for Phone Adapters	5
Overview	5
The LEDs	5
The Port	5
The Cable	6
Chapter 4: Setting Up and Connecting the Wireless-G Bridge for Phone Adapters	7
Starting the Setup Wizard	7
Running the Setup Wizard	7
Appendix A: Troubleshooting	17
Common Problems and Solutions	17
Frequently Asked Questions	18
Appendix B: Wireless Security	21
Security Precautions	21
Security Threats Facing Wireless Networks	21
Appendix C: Upgrading Firmware	24
Appendix D: Windows Help	29
Appendix E: Glossary	30
Appendix F: Specifications	35
Appendix G: Warranty Information	37
Appendix H: Regulatory Information	38
Appendix I: Contact Information	50

List of Figures

Figure 3-1: LEDs	5
Figure 3-2: Power Port	5
Figure 3-3: Combination Cable	6
Figure 4-1: Welcome Screen	7
Figure 4-2: License Agreement Screen	7
Figure 4-3: Check for Compatibility Screen	8
Figure 4-4: Disconnect the Power from the Phone Adapter or IP Phone Screen	8
Figure 4-5: Power on the Bridge Screen	9
Figure 4-6: Connecting the Network Cable to a Router Screen	9
Figure 4-7: Wireless-G Bridge Setup Screen	10
Figure 4-8: Choose a Wireless Network Screen	10
Figure 4-9: Security Settings - WPA Screen	11
Figure 4-10: Security Settings - WPA2 Screen	11
Figure 4-11: Security Settings - WEP (64-Bit) Screen	12
Figure 4-12: Security Settings - WEP Keys Screen	12
Figure 4-13: Confirmation Screen	13
Figure 4-14: If the Bridge Does Not Connect... Screen	13
Figure 4-15: Disconnect the Network Cable from the Router Screen	13
Figure 4-16: Disconnect the Power Adapter Screen	14
Figure 4-17: Disconnect the Network Cable from the Phone Adapter Screen	14
Figure 4-18: Connect the Attached Bridge Power Cable to the Phone Adapter Screen	15
Figure 4-19: Wireless is Now Active Screen	15
Figure 4-20: Congratulations Screen	16
Figure C-1: Icons	24
Figure C-2: Security Warning for Windows XP	24
Figure C-3: Upgrade Utility Setup - Welcome	24
Figure C-4: Choose Destination Location	25
Figure C-5: Setup is Complete	25
Figure C-6: Start Upgrade Utility Program	25
Figure C-7: Upgrade Utility - Browse Targets	26
Figure C-8: Browsed Devices on Network Screen - Click Files	26
Figure C-9: Open Firmware File	27

Wireless-G Bridge for Phone Adapters

Figure C-10: BIN File Information Screen	27
Figure C-11: Browsed Devices on Network Screen - Select Bridge	27
Figure C-12: Upgrade Successful	28

Chapter 1: Introduction

Welcome

Thank you for choosing the Wireless-G Bridge for Phone Adapters. With this Bridge, your wireless networking experience will be faster and easier than ever.

How does the Bridge do this? You can put your Linksys phone adapter or IP phone almost anywhere, without the cost and hassle of running network cables. The Bridge was specially designed to convert your phone adapter or IP phone into a wireless device, so it can connect to your home network without an Ethernet cable. This lets you put your phone where it's most convenient for you, and not be limited to the area around your Internet connection.

To make installation even more convenient, the Bridge shares electrical power with the phone adapter or IP phone, so only one power adapter is needed. To get connected, just plug your existing power adapter's power jack into the Bridge, and connect the power and data cables of the Bridge to the phone adapter or IP phone. The included Setup Wizard makes it easy to configure the Bridge for your wireless network. To protect your data and privacy, all wireless transmissions can be encrypted with WEP or industrial-strength, Wi-Fi Protected Access (WPA/WPA2) security.

But what does all of this mean?

Networks are useful tools for sharing computer resources. You can access one printer from different computers and access data located on another computer's hard drive. Networks are even used for playing multiplayer video games. So, networks are not only useful in homes and offices, they can also be fun.

PCs equipped with wireless cards and adapters can communicate without cumbersome cables. By sharing the same wireless settings, within their transmission radius, they form a wireless network.

The included Setup Wizard walks you through configuring the Bridge for your wireless network, step by step. Use the instructions in this Guide to help you set up and connect the Bridge as you run the Setup Wizard. These instructions should be all you need to get the most out of the Wireless-G Bridge for Phone Adapters.

network: a series of computers or devices connected for the purpose of data sharing, storage, and/or transmission between users.

adapter: a device that adds network functionality to your PC.

802.11b: an IEEE wireless networking standard that specifies a maximum data transfer rate of 11Mbps and an operating frequency of 2.4GHz.

802.11g an IEEE wireless networking standard that specifies a maximum data transfer rate of 54Mbps and an operating frequency of 2.4GHz.

What's in This User Guide?

This user guide covers the steps for setting up and using the Wireless-G Bridge for Phone Adapters.

- **Chapter 1: Introduction**
This chapter describes the Bridge's applications and this User Guide.
- **Chapter 2: Planning Your Wireless Network**
This chapter discusses a few of the basics about wireless networking.
- **Chapter 3: Getting to Know the Wireless-G Bridge for Phone Adapters**
This chapter describes the physical features of the Bridge.
- **Chapter 4: Setting Up and Connecting the Wireless-G Bridge for Phone Adapters**
This chapter shows you how to set up and connect the Bridge.
- **Appendix A: Troubleshooting**
This appendix describes some problems and solutions, as well as frequently asked questions, regarding installation and use of the Bridge.
- **Appendix B: Wireless Security**
This appendix discusses security issues regarding wireless networking and measures you can take to help protect your wireless network.
- **Appendix C: Windows Help**
This appendix describes how you can use Windows Help for instructions about networking, such as installing the TCP/IP protocol.
- **Appendix D: Glossary**
This appendix gives a brief glossary of terms frequently used in networking.
- **Appendix E: Specifications**
This appendix provides the Bridge's technical specifications.
- **Appendix F: Warranty Information**
This appendix supplies the Bridge's warranty information.
- **Appendix G: Regulatory Information**
This appendix supplies the Bridge's regulatory information.
- **Appendix H: Contact Information**
This appendix provides contact information for a variety of Linksys resources, including Technical Support.

Chapter 2: Planning Your Wireless Network

Network Topology

A wireless network is a group of computers, each equipped with one wireless adapter. Computers in a wireless network must be configured to share the same radio channel. Several PCs equipped with wireless cards or adapters can communicate with one another to form an ad-hoc network.

Linksys wireless adapters also provide users access to a wired network when using an access point or wireless router. An integrated wireless and wired network is called an infrastructure network. Each wireless PC in an infrastructure network can talk to any computer in a wired network infrastructure via the access point or wireless router.

An infrastructure configuration extends the accessibility of a wireless PC to a wired network, and can double the effective wireless transmission range for two wireless adapter PCs. Since an access point is able to forward data within a network, the effective transmission range in an infrastructure network can be doubled.

Roaming

Infrastructure mode also supports roaming capabilities for mobile users. Roaming means that you can move your wireless PC within your network and the access points will pick up the wireless PC's signal, providing that they both share the same channel and SSID.

Before you consider enabling roaming, choose a feasible radio channel and optimum access point position. Proper access point positioning combined with a clear radio signal will greatly enhance performance.

topology: the physical layout of a network.

ad-hoc: a group of wireless devices communicating directly with each other (peer-to-peer) without the use of an access point.

access point: a device that allows wireless-equipped computers and other devices to communicate with a wired network. Also used to expand the range of a wireless network

infrastructure: a wireless network that is bridged to a wired network via an access point.

roaming: the ability to take a wireless device from one access point's range to another without losing the connection.

ssid: your wireless network's name.

Network Layout

Products using the 802.11g and 802.11b standards can communicate with each other.

Access points and wireless routers are compatible with 802.11b and 802.11g adapters, such as the notebook adapters for your laptop computers, PCI adapters for your desktop PCs, and USB adapters for when you want to enjoy USB connectivity. Wireless products will also communicate with a wireless print server.

Now with the Wireless-G Bridge for Phone Adapters, you can add wireless connectivity to your Linksys phone adapter or IP phone (compatible model numbers: PAP2, SPA1001, SPA2000, SPA2002, SPA3000, SPA2100, SPA841, SPA842, SPA941, SPA942, and SPA9000).

When you wish to connect your wired network with your wireless network, network ports on access points and wireless routers can be connected to any of Linksys's switches or routers.

With these, and many other, Linksys products, your networking options are limitless. Go to the Linksys website at www.linksys.com/international for more information about wireless products.

switch: a data switch that connects computing devices to host computers, allowing a large number of devices to share a limited number of ports

router: a networking device that connects multiple networks together

Chapter 3: Getting to Know the Wireless-G Bridge for Phone Adapters

Overview

The Bridge has two LEDs, a Power port, and a permanently attached cable.

The LEDs

The Bridge has two LEDs to indicate network activity. (Not all versions of the Bridge have LEDs; however, all Bridges work the same, with or without LEDs.)

Ethernet Green. The **Ethernet** LED lights up when the Bridge has an active connection to the wired network. It flashes when the Bridge is experiencing wired network activity. The LED is not lit when the Bridge has no active connection to the wired network.

Wireless Green. The **Wireless** LED lights up when the Bridge is connected to the wireless network. It flashes when the Bridge is experiencing wireless network activity. The LED is not lit the Bridge is not connected via wireless.

When the Bridge's firmware is being upgraded, the Ethernet and Wireless LEDs alternate flashing.

The Port

The Bridge does not include its own power adapter; instead, it uses the power adapter of the Linksys phone adapter or IP phone.

Power The **Power** port only supports a 5 V, 2 A, DC power adapter, which was included with your Linksys phone adapter or IP phone. Do NOT connect any other type of power adapter to the Bridge.



IMPORTANT: Using the wrong power adapter may cause malfunction or damage your equipment.



Figure 3-1: LEDs



Figure 3-2: Power Port

The Cable

The Bridge has a combination Ethernet network and power cable.

Network For setup, you will use the Ethernet network cable to connect the Bridge to your network router or PC running the Setup Wizard. After setup, you will use this cable to connect the Bridge to the Linksys phone adapter or IP phone.

Power After the Bridge has been configured, you will connect this cable to the Power port of the Linksys phone adapter or IP phone. One power adapter will power the Bridge, as well as the phone adapter or IP phone.



Figure 3-3: Combination Cable

Chapter 4: Setting Up and Connecting the Wireless-G Bridge for Phone Adapters

To configure the Bridge, run the Setup Wizard on the CD enclosed with the Bridge. This chapter and the Setup Wizard will guide you through the installation procedure.



IMPORTANT: Do not connect the Bridge until you are instructed to do so or the setup will not work.

Starting the Setup Wizard

To begin the setup process, insert the **Setup Wizard CD-ROM** into your CD-ROM drive. The Setup Wizard should run automatically, and the *Welcome* screen should appear. If it does not, click the **Start** button and choose **Run**. In the field that appears, enter **D:\setup.exe** (if “D” is the letter of your CD-ROM drive).

On the *Welcome* screen, you have the following choices:

Click Here to Start or **Setup** - Click the **Click Here to Start** or **Setup** button to begin the software installation process.

User Guide - Click the **User Guide** button to open this User Guide.

Exit - Click **Exit** to exit the Setup Wizard.

Running the Setup Wizard

1. To install the Bridge, click the **Click Here to Start** button on the *Welcome* screen.
2. After reading the License Agreement, click **Next** if you agree and want to continue the installation, or click **Cancel** to end the installation.



Figure 4-1: Welcome Screen

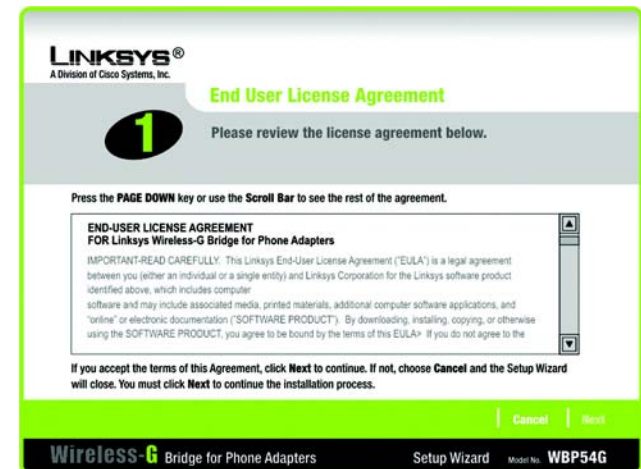


Figure 4-2: License Agreement Screen

Wireless-G Bridge for Phone Adapters

- This screen will inform you about which Linksys phone adapters and IP phones work with the Bridge. Make sure your phone adapter or IP phone is listed on-screen. Click **Next** to proceed with the installation process, or click **Back** to return to the previous screen. To exit the Setup Wizard, click **Exit**.



NOTE: The power adapter for your Linksys phone adapter or IP phone will be used to power the Bridge.

- You will use the PC running this Setup Wizard to set up the Bridge. Disconnect the power jack from the back of the Linksys phone adapter or IP phone. (You will use this power adapter to power the Bridge.) If your network router or this PC is in a different room, disconnect the power adapter from the electrical outlet. Move the power adapter and Bridge to the room where your router or PC is located.

Click **Next** to proceed, or click **Back** to return to the previous screen.

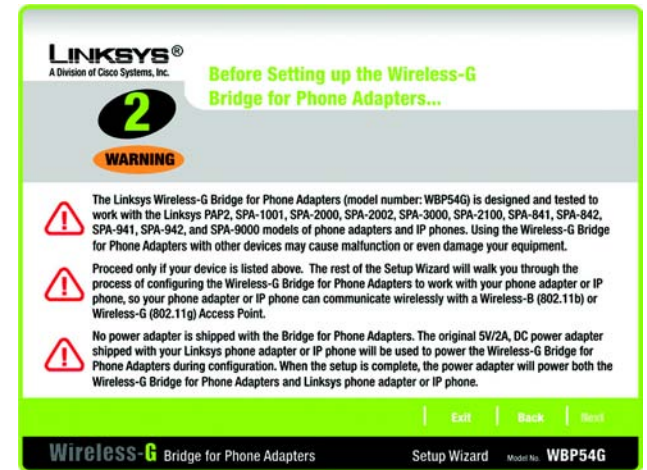


Figure 4-3: Check for Compatibility Screen

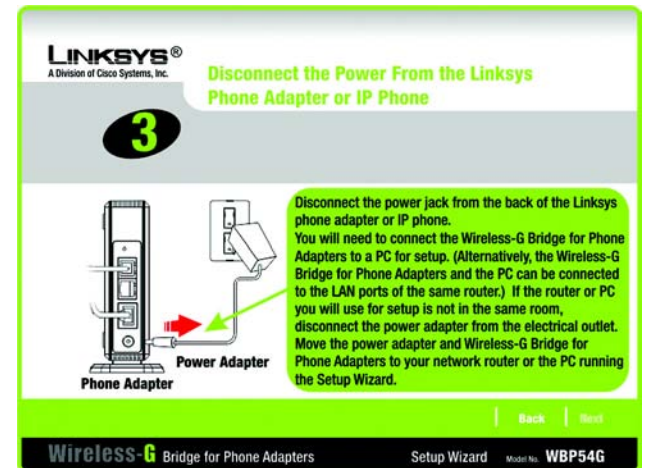


Figure 4-4: Disconnect the Power from the Phone Adapter or IP Phone Screen

Wireless-G Bridge for Phone Adapters

5. Connect the power jack to the Power port of the Bridge. Then plug the power adapter into an electrical outlet.

Click **Next** to proceed with the installation process, or click **Back** to return to the previous screen.

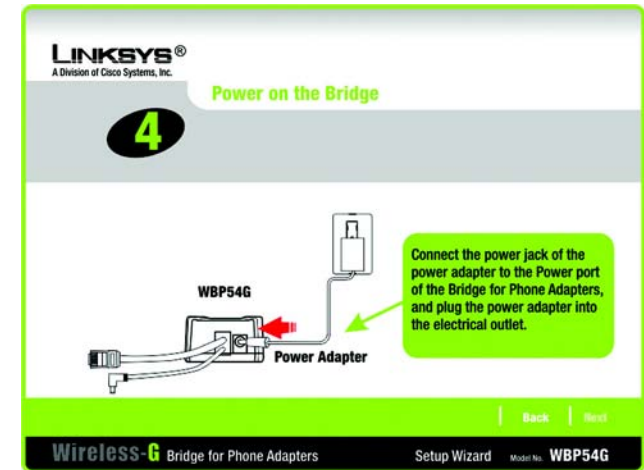


Figure 4-5: Power on the Bridge Screen

6. You will use the combination Ethernet network and power cable attached to the Bridge. Connect the Ethernet network cable of the Bridge to an Ethernet network (LAN) port of the router or PC. (Do not use the power cable now; you will use it later.)



NOTE: If you connect the Bridge to a router, make sure the Bridge and PC running the Setup Wizard are connected to the Ethernet network (LAN) ports of the same router.

Make sure the Bridge's Ethernet LED is solidly lit or flashing.

Click **Next** to proceed, or click **Back** to return to the previous screen.

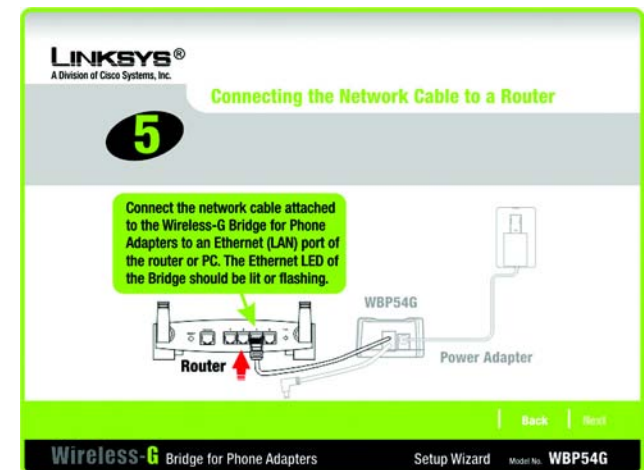


Figure 4-6: Connecting the Network Cable to a Router Screen

Wireless-G Bridge for Phone Adapters

- A list of all Bridges for Phone Adapters that can be detected by the Setup Wizard will be displayed. Select the Bridge you are installing and click **Next**. If the Bridge you want is not displayed, click the **Refresh List** button to search again.

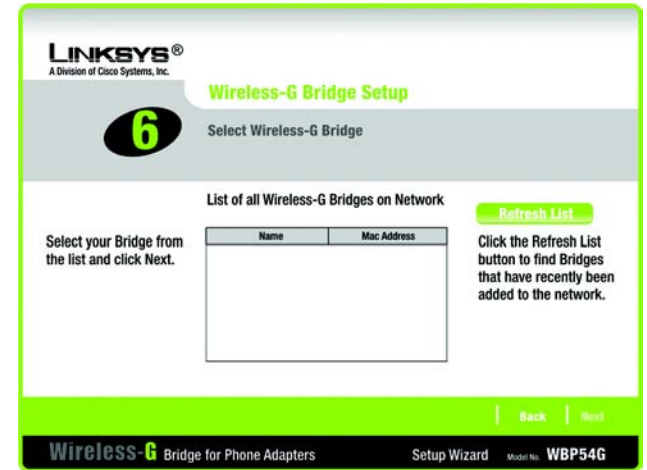


Figure 4-7: Wireless-G Bridge Setup Screen

- This screen will display a list of wireless networks that can be detected and their status information: SSID (network name), MAC Address, Channel, Signal (strength), and Security (method). Select the wireless network you want.

If the network you want is not displayed, click the **Refresh List** button to search again.

To manually enter the SSID of the network you want, click the **SSID** radio button and complete the *SSID* field.



IMPORTANT: Some wireless access points or routers do not broadcast their status information. If you do not see the network you want, click the **SSID** radio button and manually enter its SSID.

Click **Next** to proceed, or click **Back** to return to the previous screen.

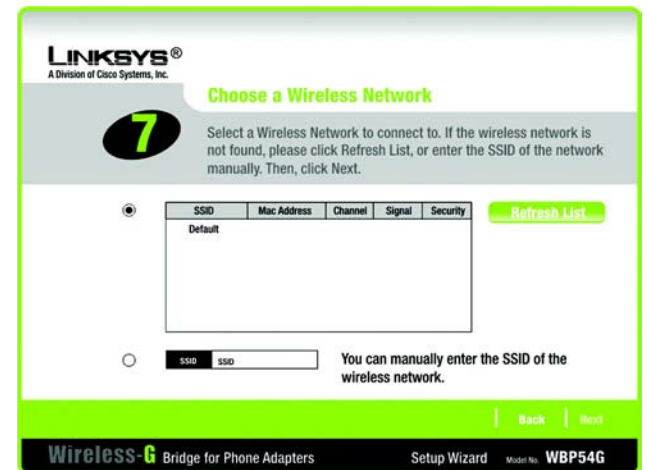


Figure 4-8: Choose a Wireless Network Screen

Wireless-G Bridge for Phone Adapters

- Configure the wireless security settings. Select the method your network is using, WPA, WPA2, WEP (128-Bit), or WEP (64-Bit). Then proceed to the appropriate instructions. If you are not using wireless security, select **Disabled**, and proceed to step 10.

WPA

WPA automatically uses TKIP with dynamic encryption keys. Enter a passphrase on this screen.

Encryption - TKIP is automatically selected as the encryption method.

Passphrase - Enter a Passphrase, also called a pre-shared key, of 8-63 characters in the *Passphrase* field. The longer and more complex your Passphrase is, the more secure your network will be.

Click **Next** to proceed, or click **Back** to return to the previous screen.

WPA2

WPA2 automatically uses AES with dynamic encryption keys (AES is a stronger encryption method than TKIP). Enter a passphrase on this screen.

Encryption - AES is automatically selected as the encryption method.

Passphrase - Enter a Passphrase, also called a pre-shared key, of 8-63 characters in the *Passphrase* field. The longer and more complex your Passphrase is, the more secure your network will be.

Click **Next** to proceed, or click **Back** to return to the previous screen.

encryption: encoding data transmitted in a network.

wpa (wi-fi protected access): a wireless security protocol using TKIP (Temporal Key Integrity Protocol) encryption.

wpa2 (wi-fi protected access 2): a wireless security protocol using AES (Advanced Encryption Standard) encryption.

wep (wired equivalent privacy): a method of encrypting network data transmitted on a wireless network.

Figure 4-9: Security Settings - WPA Screen

Figure 4-10: Security Settings - WPA2 Screen

WEP (128-Bit) or WEP (64-Bit)

Enter a passphrase in the *Passphrase* field and click **Next**. If you want to manually enter a WEP key, leave the *Passphrase* field blank and click **Next**.

Passphrase - Enter a passphrase in the *Passphrase* field, so a WEP key is automatically generated. The passphrase is case-sensitive and should not be longer than 16 alphanumeric characters. It must match the passphrase of your other wireless network devices and is compatible with Linksys wireless products only. (If you have any non-Linksys wireless products, enter the WEP key manually on those products.)

A new screen will appear. If you entered a Passphrase, the WEP key(s) will be displayed. If you did not enter a Passphrase, enter the WEP key(s) on this screen. Then select the key you will use from the *Key Index* drop-down menu.

Key 1-4 - One to four fields will be displayed, depending on the level of encryption you have selected. The WEP key you enter must match the WEP key of your wireless network. For 64-bit WEP encryption, enter exactly 10 hexadecimal characters. For 128-bit WEP encryption, enter exactly 26 hexadecimal characters. Valid hexadecimal characters are “0” to “9” and “A” to “F”.

Key Index - The default transmit key number is **1**. If your network’s access point or wireless router uses transmit key number 2, 3, or 4, select the appropriate number from the *Key Index* drop-down menu.

Click **Next** to proceed, or click **Back** to return to the previous screen.

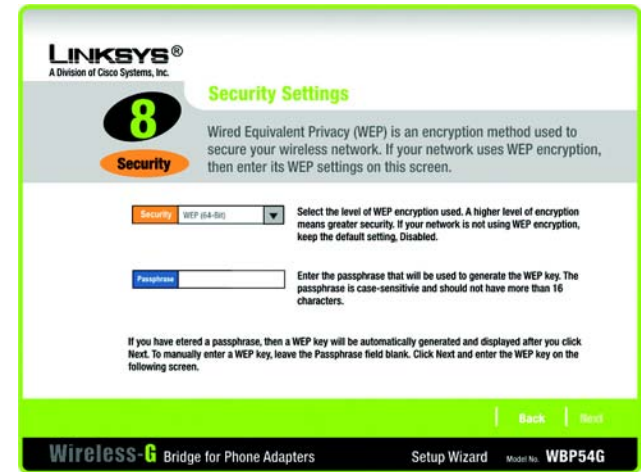


Figure 4-11: Security Settings - WEP (64-Bit) Screen

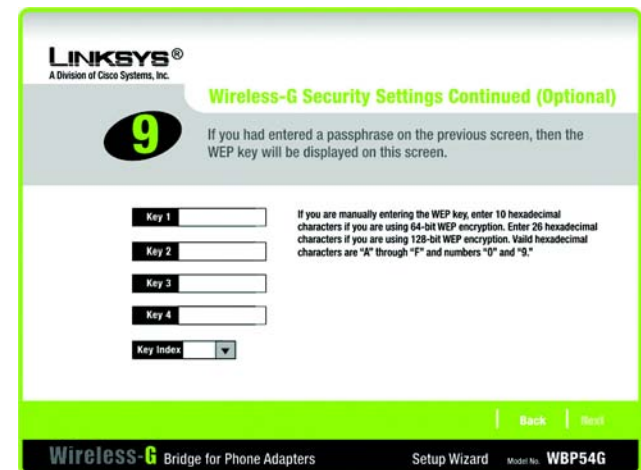


Figure 4-12: Security Settings - WEP Keys Screen

Wireless-G Bridge for Phone Adapters

10. The new settings will be displayed. Review them before you proceed. Click **Next** to save your new settings, or click **Back** to return to the previous screen.

11. The Bridge will attempt to connect to the wireless network using the new settings.

Make sure the Bridge's Wireless LED is solidly lit or flashing. This indicates that the Bridge has connected to the wireless network. If the attempt succeeds, proceed to step 12.

If the attempt fails, you have two options offered by a pop-up screen. Click the **Yes** button to save the new settings and proceed, or click the **No** button to return to the *Choose a Wireless Network* screen and reconfigure the settings.

12. Disconnect the Ethernet network cable of the Bridge from the router or PC.

Click **Next** to proceed, or click **Back** to return to the previous screen.

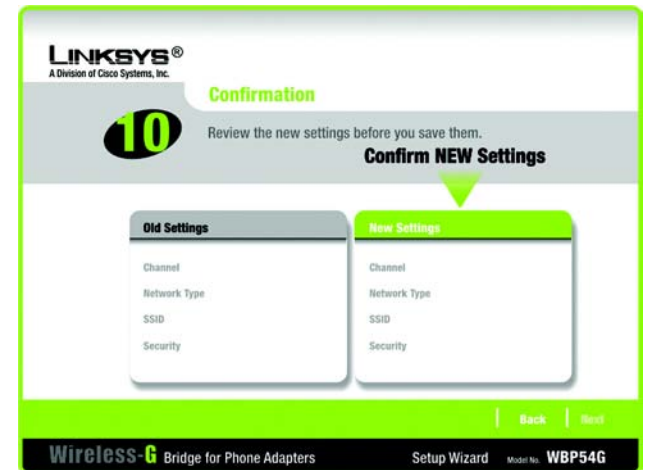


Figure 4-13: Confirmation Screen

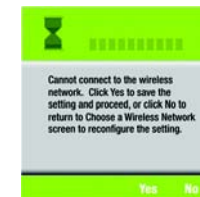


Figure 4-14: If the Bridge Does Not Connect... Screen

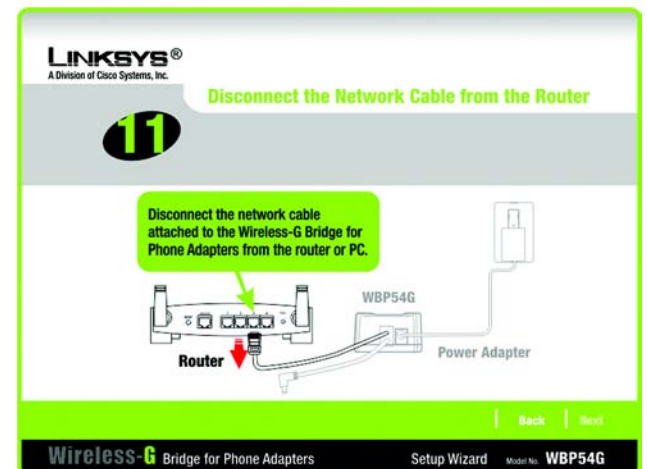


Figure 4-15: Disconnect the Network Cable from the Router Screen

Wireless-G Bridge for Phone Adapters

13. If the phone adapter or IP phone is in a different room, disconnect the power adapter from the electrical outlet. Move the power adapter and Bridge to the location of the phone adapter or IP phone.

Click **Next** to proceed, or click **Back** to return to the previous screen.

14. Disconnect the Ethernet network cable from the phone adapter or IP phone.

You will use the combination Ethernet network and power cable attached to the Bridge. Connect the Ethernet network cable of the Bridge to the phone adapter or IP phone.

Click **Next** to proceed, or click **Back** to return to the previous screen.

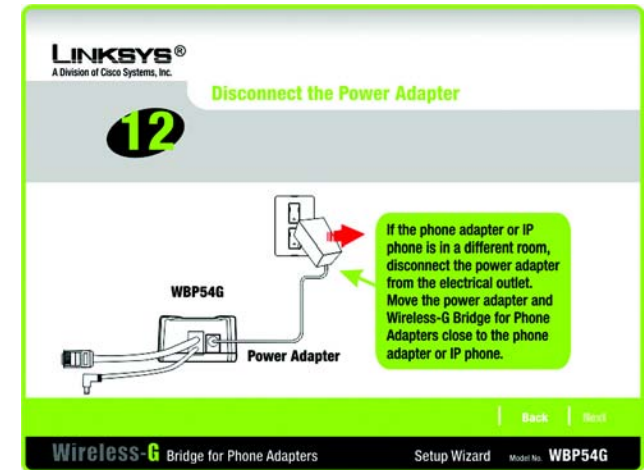


Figure 4-16: Disconnect the Power Adapter Screen

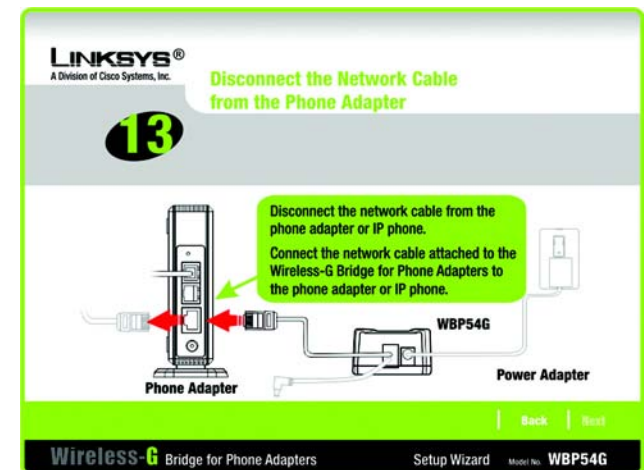


Figure 4-17: Disconnect the Network Cable from the Phone Adapter Screen

Wireless-G Bridge for Phone Adapters

15. Connect the power cable of the Bridge to the Power port of the phone adapter or IP phone. Then connect the power adapter to an electrical outlet.

Make sure the Bridge's Ethernet and Wireless LEDs are solidly lit or flashing.

Click **Next** to proceed, or click **Back** to return to the previous screen.

16. Make sure your cable connections match the cable connections shown on-screen.

Click **Next** to proceed, or click **Back** to return to the previous screen.

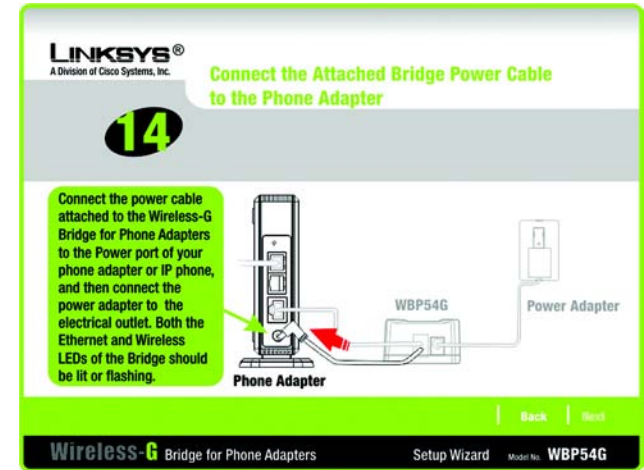


Figure 4-18: Connect the Attached Bridge Power Cable to the Phone Adapter Screen



Figure 4-19: Wireless is Now Active Screen

Wireless-G Bridge for Phone Adapters

17. The *Congratulations* screen will appear. Click **Exit** to exit the Setup Wizard, or click **Online Registration** to register the Bridge at www.linksys.com/registration.

Congratulations! Setup is complete.



Figure 4-20: Congratulations Screen

Appendix A: Troubleshooting

This appendix consists of two parts: “Common Problems and Solutions” and “Frequently Asked Questions.” This appendix provides solutions to problems that may occur during the installation and operation of the Wireless-G Bridge for Phone Adapters. Read the description below to solve your problems. If you can't find an answer here, check the Linksys website at www.linksys.com/international.

Common Problems and Solutions

1. *The Setup Wizard cannot detect the Wireless-G Bridge for Phone Adapters.*

The Bridge cannot be configured over the wireless network. Confirm that the Bridge is properly connected to your network router or PC running the Setup Wizard. Make sure the Ethernet network cable is securely connected and the Ethernet LED should be solidly lit or flashing.

2. *The speed of the wireless connection is very slow.*

If there is significant traffic (“noise”) in your wireless environment, then the speed will drop. Make sure you have a clear line of sight between your wireless devices. Also, some electrical and electronic devices generate interference. You can often locate these by checking wireless data transmission speeds by powering on and off a different device, one at a time.

3. *The Linksys phone adapter or IP phone connected to the Bridge does not have a valid IP address.*

This problem does not involve the Bridge (the Bridge only provides a connection between the wireless network and the phone adapter or IP phone). Make sure the phone adapter or IP phone has been configured properly, so that it is assigned a valid IP address. (The Bridge does not have its own IP address.)

4. *The Setup Wizard reported that the Bridge has successfully connected to the wireless network; however, the wireless connection does not seem to be working.*

There may be an error with the Bridge's security settings. Make sure you have written down the correct settings for your wireless network. Then run the Setup Wizard for the Bridge. Check the following:

- If your wireless network has its security enabled, make sure the WEP key and other settings you entered during the Bridge's Setup Wizard are correct.
- If your wireless network has its security disabled, make sure no WEP key or other security setting was entered during the Bridge's Setup Wizard.

Frequently Asked Questions

Which Linksys products will the Bridge work with?

The Bridge will work with these Linksys phone adapters and IP phones, listed by model number: PAP2, SPA1001, SPA2000, SPA2002, SPA3000, SPA2100, SPA841, SPA842, SPA941, SPA942, and SPA9000. Do not use the Bridge with any other products; otherwise, this may cause malfunction or even damage your equipment.

The Bridge does not include a power adapter. How do I supply power to it?

The Bridge uses the power adapter for your Linksys phone adapter or IP phone. A combination power and Ethernet network cable is attached to the Bridge. You will use the power adapter and this cable to power the Bridge and your Linksys phone adapter or IP phone. Refer to “Chapter 4: Setting Up and Configuring the Wireless-G Bridge for Phone Adapters” for instructions.

What is the IEEE 802.11b standard?

It is one of the IEEE standards for wireless networks. The 802.11b standard allows wireless networking hardware from different manufacturers to communicate, provided that the hardware complies with the 802.11b standard. The 802.11b standard states a maximum data transfer rate of 11Mbps and an operating frequency of 2.4GHz.

What is the IEEE 802.11g standard?

It is one of the IEEE standards for wireless networks. The 802.11g standard allows wireless networking hardware from different manufacturers to communicate, provided that the hardware complies with the 802.11g standard. The 802.11g standard states a maximum data transfer rate of 54Mbps and an operating frequency of 2.4GHz.

What IEEE 802.11b features are supported?

The product supports the following IEEE 802.11b functions:

- CSMA/CA plus Acknowledge protocol
- Multi-Channel Roaming
- Automatic Rate Selection
- RTS/CTS feature
- Fragmentation
- Power Management

What IEEE 802.11g features are supported?

The product supports the following IEEE 802.11g functions:

- CSMA/CA plus Acknowledge protocol
- OFDM protocol
- Multi-Channel Roaming
- Automatic Rate Selection
- RTS/CTS feature
- Fragmentation
- Power Management

What is infrastructure mode?

When a wireless network is set to infrastructure mode, the wireless network is configured to communicate with a wired network through a wireless access point.

What is roaming?

Roaming is the ability of a portable computer to communicate continuously while the user is moving freely throughout an area greater than that covered by a single access point. Before using the roaming function, the workstation must make sure that it is the same channel number with the access point of dedicated coverage area.

To achieve true seamless connectivity, the wireless LAN must incorporate a number of different functions. Each node and access point, for example, must always acknowledge receipt of each message. Each node must maintain contact with the wireless network even when not actually transmitting data. Achieving these functions simultaneously requires a dynamic RF networking technology that links access points and nodes. In such a system, the user's end node undertakes a search for the best possible access to the system. First, it evaluates such factors as signal strength and quality, as well as the message load currently being carried by each access point and the distance of each access point to the wired backbone. Based on that information, the node next selects the right access point and registers its address. Communications between end node and host computer can then be transmitted up and down the backbone.

As the user moves on, the end node's RF transmitter regularly checks the system to determine whether it is in touch with the original access point or whether it should seek a new one. When a node no longer receives acknowledgment from its original access point, it undertakes a new search. Upon finding a new access point, it then re-registers, and the communication process continues.

What is the ISM band?

The FCC and their counterparts outside of the U.S. have set aside bandwidth for unlicensed use in the ISM (Industrial, Scientific and Medical) band. Spectrum in the vicinity of 2.4 GHz, in particular, is being made available

worldwide. This presents a truly revolutionary opportunity to place convenient high-speed wireless capabilities in the hands of users around the globe.

What is Spread Spectrum?

Spread Spectrum technology is a wideband radio frequency technique developed by the military for use in reliable, secure, mission-critical communications systems. It is designed to trade off bandwidth efficiency for reliability, integrity, and security. In other words, more bandwidth is consumed than in the case of narrowband transmission, but the trade-off produces a signal that is, in effect, louder and thus easier to detect, provided that the receiver knows the parameters of the spread-spectrum signal being broadcast. If a receiver is not tuned to the right frequency, a spread-spectrum signal looks like background noise. There are two main alternatives, Direct Sequence Spread Spectrum (DSSS) and Frequency Hopping Spread Spectrum (FHSS).

What is DSSS? What is FHSS? And what are their differences?

Frequency-Hopping Spread-Spectrum (FHSS) uses a narrowband carrier that changes frequency in a pattern that is known to both transmitter and receiver. Properly synchronized, the net effect is to maintain a single logical channel. To an unintended receiver, FHSS appears to be short-duration impulse noise. Direct-Sequence Spread-Spectrum (DSSS) generates a redundant bit pattern for each bit to be transmitted. This bit pattern is called a chip (or chipping code). The longer the chip, the greater the probability that the original data can be recovered. Even if one or more bits in the chip are damaged during transmission, statistical techniques embedded in the radio can recover the original data without the need for retransmission. To an unintended receiver, DSSS appears as low power wideband noise and is rejected (ignored) by most narrowband receivers.

Would the information be intercepted while transmitting on air?

The Bridge features two-fold protection in security. On the hardware side, as with Direct Sequence Spread Spectrum technology, it has the inherent security feature of scrambling. On the software side, the Bridge offers a variety of security methods, including WEP and WPA, to enhance security and access control. For more information, refer to “Appendix B: Wireless Security.”

What is WEP?

WEP is Wired Equivalent Privacy, a data privacy mechanism based on a shared key algorithm, as described in the IEEE 802.11 standard. For more information, refer to “Appendix B: Wireless Security.”

What is WPA?

WPA is Wi-Fi Protected Access, a wireless security protocol that can be used in conjunction with a RADIUS (Remote Authentication Dial-In User Service) server. For more information, refer to “Appendix B: Wireless Security.”

Appendix B: Wireless Security

Linksys wants to make wireless networking as safe and easy for you as possible. The current generation of Linksys products provide several network security features, but they require specific action on your part for implementation. So, keep the following in mind whenever you are setting up or using your wireless network.

Security Precautions

The following is a complete list of security precautions to take (at least steps 1 through 5 should be followed):

1. Change the default SSID.
2. Disable SSID Broadcast.
3. Change the default password for the Administrator account.
4. Enable MAC Address Filtering.
5. Change the SSID periodically.
6. Use the highest encryption algorithm possible. Use WPA if it is available. Please note that this may reduce your network performance.
7. Change the encryption keys periodically.

Security Threats Facing Wireless Networks

Wireless networks are easy to find. Hackers know that in order to join a wireless network, wireless networking products first listen for “beacon messages”. These messages can be easily decrypted and contain much of the network’s information, such as the network’s SSID (Service Set Identifier). Here are the steps you can take:

Change the administrator’s password regularly. With every wireless networking device you use, keep in mind that network settings (SSID, WEP keys, etc.) are stored in its firmware. Your network administrator is the only person who can change network settings. If a hacker gets a hold of the administrator’s password, he, too, can change those settings. So, make it harder for a hacker to get that information. Change the administrator’s password regularly.



NOTE: Some of these security features are available only through the network router or access point. Refer to the router or access point’s documentation for more information.

Wireless-G Bridge for Phone Adapters

SSID. There are several things to keep in mind about the SSID:

1. Disable Broadcast
2. Make it unique
3. Change it often

Most wireless networking devices will give you the option of broadcasting the SSID. While this option may be more convenient, it allows anyone to log into your wireless network. This includes hackers. So, don't broadcast the SSID.

Wireless networking products come with a default SSID set by the factory. (The Linksys default SSID is "linksys".) Hackers know these defaults and can check these against your network. Change your SSID to something unique and not something related to your company or the networking products you use.

Change your SSID regularly so that any hackers who have gained access to your wireless network will have to start from the beginning in trying to break in.

MAC Addresses. Enable MAC Address filtering. MAC Address filtering will allow you to provide access to only those wireless nodes with certain MAC Addresses. This makes it harder for a hacker to access your network with a random MAC Address.

WEP Encryption. Wired Equivalent Privacy (WEP) is often looked upon as a cure-all for wireless security concerns. This is overstating WEP's ability. Again, this can only provide enough security to make a hacker's job more difficult.

There are several ways that WEP can be maximized:

1. Use the highest level of encryption possible
2. Use "Shared Key" authentication
3. Change your WEP key regularly

WPA. Wi-Fi Protected Access (WPA) is the newest and best available standard in Wi-Fi security. Two modes are available: WPA and WPA2. For encryption, WPA automatically uses Temporal Key Integrity Protocol (TKIP), which incorporates Message Integrity Code (MIC) to provide protection against hackers. WPA2-Personal only uses Advanced Encryption Standard (AES) encryption, which is stronger than TKIP and utilizes a symmetric 128-bit block data encryption.

WPA. Enter a password in the *Passphrase* field of 8-63 characters.



IMPORTANT: Always remember that each device in your wireless network **MUST** use the same encryption method and encryption key or your wireless network will not function properly.

Wireless-G Bridge for Phone Adapters

WPA2. Enter a password in the *Passphrase* field of 8-63 characters.

Implementing encryption may have a negative impact on your network's performance, but if you are transmitting sensitive data over your network, encryption should be used.

These security recommendations should help keep your mind at ease while you are enjoying the most flexible and convenient technology Linksys has to offer.

Appendix C: Upgrading Firmware

To upgrade the Bridge's firmware, follow these instructions:

1. On a computer running Windows 2000 or XP, download the upgrade application (WBP54G Upgrade Application.zip) and the latest firmware from Linksys's website at www.linksys.com/international.
2. Extract the files on your computer's desktop. The unzipped firmware file is a .bin file, and the program to install the upgrade application is an .exe file named Upgrade 210. Their icons will appear on your desktop.
3. Double-click the **Upgrade 210** icon to install the Upgrade Utility on your computer.

If your computer is running Windows XP, you may see a security warning screen. Click the **Run** button to proceed.

4. The *Welcome* screen will appear. Click the **Next** button.

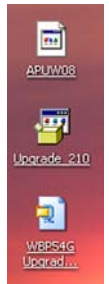


Figure C-1: Icons



Figure C-2: Security Warning for Windows XP



Figure C-3: Upgrade Utility Setup - Welcome

5. On the *Choose Destination Location* screen, click the **Next** button.



Figure C-4: Choose Destination Location

6. When the utility has been installed, a pop-up screen will appear. Click the **OK** button.

7. A new window will appear on your desktop. You will use it later in step 9.

Disconnect the Bridge's combination Ethernet network and power cable from the phone adapter or IP phone.

If your PC is in a different room, disconnect the power adapter from the electrical outlet. Move the power adapter and Bridge to the location of your PC.

8. Connect the Ethernet network cable of the Bridge to an Ethernet network (LAN) port of the PC.

If necessary, plug the power adapter into an electrical outlet.

9. In the new window on your desktop, double-click **Upgrade Utility**.



Figure C-5: Setup is Complete

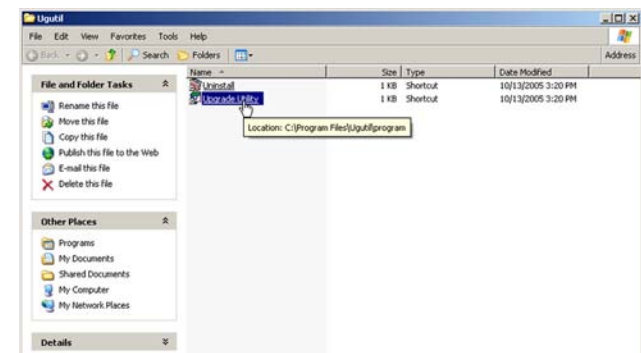


Figure C-6: Start Upgrade Utility Program

10. The *Upgrade Utility* screen will appear. Click **Browse**, and then click **Browse Targets**.

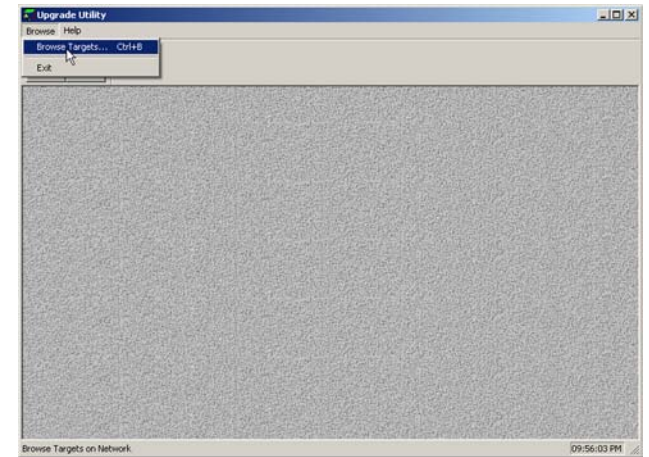


Figure C-7: Upgrade Utility - Browse Targets

11. The *Browsed Devices on Network* screen will appear. Click the **Files** button.

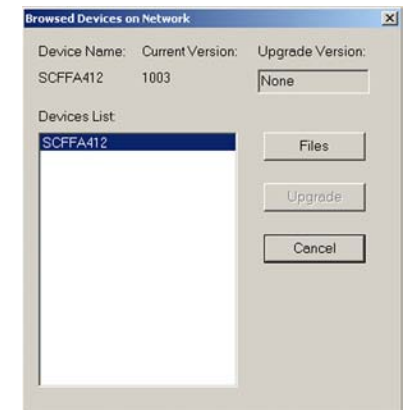


Figure C-8: Browsed Devices on Network Screen - Click Files

Wireless-G Bridge for Phone Adapters

12. Select the extracted firmware file, and then click the **Open** button.

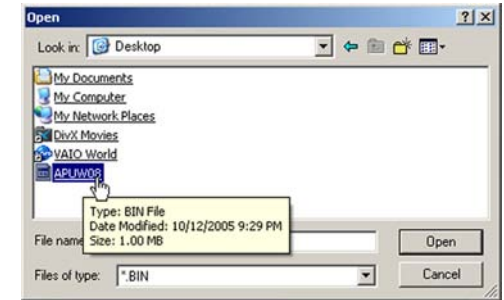


Figure C-9: Open Firmware File

13. The *BIN File Information* screen will appear. Click the **OK** button.

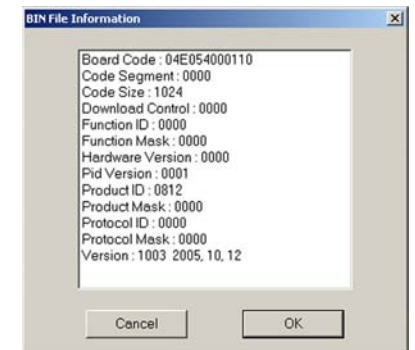


Figure C-10: BIN File Information Screen

14. On the *Browsed Devices on Network* screen, select the Bridge from the Devices List, and click the **Upgrade** button.

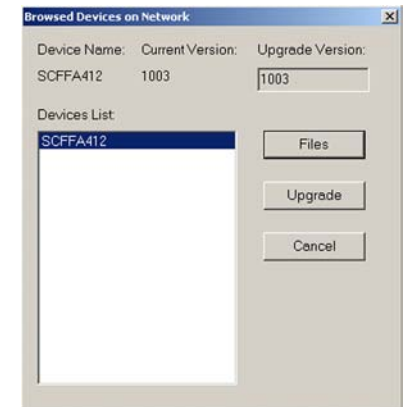


Figure C-11: Browsed Devices on Network Screen - Select Bridge

Wireless-G Bridge for Phone Adapters

15. The Upgrade Utility will upgrade the Bridge's firmware. A pop-up screen will appear when the upgrade is complete. Click the **OK** button.



IMPORTANT: Do not disconnect the power adapter from the Bridge while the firmware is being upgraded. Otherwise, damage may occur to the Bridge.

16. Disconnect the Ethernet network cable from the PC.

If the phone adapter or IP phone is in a different room, disconnect the power adapter from the electrical outlet. Move the power adapter and Bridge to the location of the phone adapter or IP phone.

17. Connect the Ethernet network cable of the Bridge to the phone adapter or IP phone.

18. Connect the power cable of the Bridge to the Power port of the phone adapter or IP phone.

If necessary, plug the power adapter into an electrical outlet.



Figure C-12: Upgrade Successful

Appendix D: Windows Help

Almost all wireless products require Microsoft Windows. Windows is the most used operating system in the world and comes with many features that help make networking easier. These features can be accessed through Windows Help and are described in this appendix.

TCP/IP

Before a computer can communicate with an access point or wireless router, TCP/IP must be enabled. TCP/IP is a set of instructions, or protocol, all PCs follow to communicate over a network. This is true for wireless networks as well. Your PCs will not be able to utilize wireless networking without having TCP/IP enabled. Windows Help provides complete instructions on enabling TCP/IP.

Shared Resources

If you wish to share printers, folder, or files over your network, Windows Help provides complete instructions on utilizing shared resources.

Network Neighborhood/My Network Places

Other PCs on your network will appear under Network Neighborhood or My Network Places (depending upon the version of Windows you're running). Windows Help provides complete instructions on adding PCs to your network.

Appendix E: Glossary

This glossary contains some basic networking terms you may come across when using this product. For more advanced terms, see the complete Linksys glossary at <http://www.linksys.com/glossary>.

Access Point - A device that allows wireless-equipped computers and other devices to communicate with a wired network. Also used to expand the range of a wireless network.

Ad-hoc - A group of wireless devices communicating directly with each other (peer-to-peer) without the use of an access point.

AES (Advanced Encryption Standard) - A security method that uses symmetric 128-bit block data encryption.

Bandwidth - The transmission capacity of a given device or network.

Bit - A binary digit.

Boot - To start a device and cause it to start executing instructions.

Broadband - An always-on, fast Internet connection.

Browser - An application program that provides a way to look at and interact with all the information on the World Wide Web.

Byte - A unit of data that is usually eight bits long

Cable Modem - A device that connects a computer to the cable television network, which in turn connects to the Internet.

Daisy Chain - A method used to connect devices in a series, one after the other.

DDNS (Dynamic Domain Name System) - Allows the hosting of a website, FTP server, or e-mail server with a fixed domain name (e.g., www.xyz.com) and a dynamic IP address.

Default Gateway - A device that forwards Internet traffic from your local area network.

DHCP (Dynamic Host Configuration Protocol) - A networking protocol that allows administrators to assign temporary IP addresses to network computers by "leasing" an IP address to a user for a limited amount of time, instead of assigning permanent IP addresses.

Wireless-G Bridge for Phone Adapters

DMZ (Demilitarized Zone) - Removes the Router's firewall protection from one PC, allowing it to be "seen" from the Internet.

DNS (Domain Name Server) - The IP address of your ISP's server, which translates the names of websites into IP addresses.

Domain - A specific name for a network of computers.

Download - To receive a file transmitted over a network.

DSL (Digital Subscriber Line) - An always-on broadband connection over traditional phone lines.

Dynamic IP Address - A temporary IP address assigned by a DHCP server.

EAP (Extensible Authentication Protocol) - A general authentication protocol used to control network access. Many specific authentication methods work within this framework.

Encryption - Encoding data transmitted in a network.

Ethernet - IEEE standard network protocol that specifies how data is placed on and retrieved from a common transmission medium.

Firewall - A set of related programs located at a network gateway server that protects the resources of a network from users from other networks.

Firmware - The programming code that runs a networking device.

FTP (File Transfer Protocol) - A protocol used to transfer files over a TCP/IP network.

Full Duplex - The ability of a networking device to receive and transmit data simultaneously.

Gateway - A device that interconnects networks with different, incompatible communications protocols.

Half Duplex - Data transmission that can occur in two directions over a single line, but only one direction at a time.

HTTP (HyperText Transport Protocol) - The communications protocol used to connect to servers on the World Wide Web.

Infrastructure - A wireless network that is bridged to a wired network via an access point.

IP (Internet Protocol) - A protocol used to send data over a network.

Wireless-G Bridge for Phone Adapters

IP Address - The address used to identify a computer or device on a network.

IPCONFIG - A Windows 2000 and XP utility that displays the IP address for a particular networking device.

IPSec (Internet Protocol Security) - A VPN protocol used to implement secure exchange of packets at the IP layer.

ISP (Internet Service Provider) - A company that provides access to the Internet.

LAN - The computers and networking products that make up your local network.

MAC (Media Access Control) Address - The unique address that a manufacturer assigns to each networking device.

Mbps (MegaBits Per Second) - One million bits per second; a unit of measurement for data transmission.

NAT (Network Address Translation) - NAT technology translates IP addresses of a local area network to a different IP address for the Internet.

Network - A series of computers or devices connected for the purpose of data sharing, storage, and/or transmission between users.

Packet - A unit of data sent over a network.

Passphrase - Used much like a password, a passphrase simplifies the WEP encryption process by automatically generating the WEP encryption keys for Linksys products.

Ping (Packet Internet Groper) - An Internet utility used to determine whether a particular IP address is online.

POP3 (Post Office Protocol 3) - A standard mail server commonly used on the Internet.

Port - The connection point on a computer or networking device used for plugging in cables or adapters.

Power over Ethernet (PoE) - A technology enabling an Ethernet network cable to deliver both data and power.

PPPoE (Point to Point Protocol over Ethernet) - A type of broadband connection that provides authentication (username and password) in addition to data transport.

PPTP (Point-to-Point Tunneling Protocol) - A VPN protocol that allows the Point to Point Protocol (PPP) to be tunneled through an IP network. This protocol is also used as a type of broadband connection in Europe.

RADIUS (Remote Authentication Dial-In User Service) - A protocol that uses an authentication server to control network access.

Wireless-G Bridge for Phone Adapters

RJ-45 (Registered Jack-45) - An Ethernet connector that holds up to eight wires.

Roaming - The ability to take a wireless device from one access point's range to another without losing the connection.

Router - A networking device that connects multiple networks together.

Server - Any computer whose function in a network is to provide user access to files, printing, communications, and other services.

SMTP (Simple Mail Transfer Protocol) - The standard e-mail protocol on the Internet.

SNMP (Simple Network Management Protocol) - A widely used network monitoring and control protocol.

SPI (Stateful Packet Inspection) Firewall - A technology that inspects incoming packets of information before allowing them to enter the network.

SSID (Service Set Identifier) - Your wireless network's name.

Static IP Address - A fixed address assigned to a computer or device that is connected to a network.

Static Routing - Forwarding data in a network via a fixed path.

Subnet Mask - An address code that determines the size of the network.

Switch - 1. A data switch that connects computing devices to host computers, allowing a large number of devices to share a limited number of ports. 2. A device for making, breaking, or changing the connections in an electrical circuit.

TCP (Transmission Control Protocol) - A network protocol for transmitting data that requires acknowledgement from the recipient of data sent.

TCP/IP (Transmission Control Protocol/Internet Protocol) - A set of instructions PCs use to communicate over a network.

Telnet - A user command and TCP/IP protocol used for accessing remote PCs.

TFTP (Trivial File Transfer Protocol) - A version of the TCP/IP FTP protocol that has no directory or password capability.

Throughput - The amount of data moved successfully from one node to another in a given time period.

Wireless-G Bridge for Phone Adapters

TKIP (Temporal Key Integrity Protocol) - a wireless encryption protocol that provides dynamic encryption keys for each packet transmitted.

Topology - The physical layout of a network.

TX Rate - Transmission Rate.

Upgrade - To replace existing software or firmware with a newer version.

Upload - To transmit a file over a network.

URL (Uniform Resource Locator) - The address of a file located on the Internet.

VPN (Virtual Private Network) - A security measure to protect data as it leaves one network and goes to another over the Internet.

WAN (Wide Area Network)- The Internet.

WEP (Wired Equivalent Privacy) - A method of encrypting network data transmitted on a wireless network for greater security.

WLAN (Wireless Local Area Network) - A group of computers and associated devices that communicate with each other wirelessly.

WPA (Wi-Fi Protected Access) - A wireless security protocol using TKIP (Temporal Key Integrity Protocol) encryption, which can be used in conjunction with a RADIUS server.

Appendix F: Specifications

Model	WBP54G
Standards	IEEE 802.3, IEEE 802.3u, IEEE 802.11b, IEEE 802.11g
Port	One 5V/2A DC power input port
LEDs	Ethernet and Wireless
Cabling Type	One combo-power/Ethernet cable (with built-in connectors) attached to the device
# of Antennas	One internal Helix antenna
Connector Type	One female barrel jack (power input), one male barrel jack (power output), one RJ-45 Ethernet connector
RF Pwr (EIRP) in dBm	13 ±1,5dBm (802.11g) / 17 ±1,5dBm (802.11b)
Antenna Gain in dBi	1 dBi
Security Features	WPA2, WPA, WEP
WEP Key Bits	64, 128
Dimensions	51 mm x 92 mm x 29 mm (2,01" x 3,62" x 1,14")
Unit Weight	0,072 kg (2,54 oz.)
Power	External, 5V DC, 2,0A (Not included, use the power adapter shipped with Linksys phone adapter or IP phone products)

Wireless-G Bridge for Phone Adapters

Certifications	FCC, CE, cUL, IC-03, Wi-Fi, WPA, WPA2
Operating Temp.	0° C to 40° C (32° F to 104° F)
Storage Temp.	-20° C to 70° C (-4° F to 158° F)
Operating Humidity	10% to 85% Non-Condensing
Storage Humidity	5% to 90% Non-Condensing

Appendix G: Warranty Information

Linksys warrants to You that, for a period of three years (the “Warranty Period”), your Linksys Product will be substantially free of defects in materials and workmanship under normal use. Your exclusive remedy and Linksys' entire liability under this warranty will be for Linksys at its option to repair or replace the Product or refund Your purchase price less any rebates. This limited warranty extends only to the original purchaser.

If the Product proves defective during the Warranty Period call Linksys Technical Support in order to obtain a Return Authorization Number, if applicable. BE SURE TO HAVE YOUR PROOF OF PURCHASE ON HAND WHEN CALLING. If You are requested to return the Product, mark the Return Authorization Number clearly on the outside of the package and include a copy of your original proof of purchase. RETURN REQUESTS CANNOT BE PROCESSED WITHOUT PROOF OF PURCHASE. You are responsible for shipping defective Products to Linksys. Linksys pays for UPS Ground shipping from Linksys back to You only. Customers located outside of the United States of America and Canada are responsible for all shipping and handling charges.

ALL IMPLIED WARRANTIES AND CONDITIONS OF MERCHANTABILITY OR FITNESS FOR A PARTICULAR PURPOSE ARE LIMITED TO THE DURATION OF THE WARRANTY PERIOD. ALL OTHER EXPRESS OR IMPLIED CONDITIONS, REPRESENTATIONS AND WARRANTIES, INCLUDING ANY IMPLIED WARRANTY OF NON-INFRINGEMENT, ARE DISCLAIMED. Some jurisdictions do not allow limitations on how long an implied warranty lasts, so the above limitation may not apply to You. This warranty gives You specific legal rights, and You may also have other rights which vary by jurisdiction.

This warranty does not apply if the Product (a) has been altered, except by Linksys, (b) has not been installed, operated, repaired, or maintained in accordance with instructions supplied by Linksys, or (c) has been subjected to abnormal physical or electrical stress, misuse, negligence, or accident. In addition, due to the continual development of new techniques for intruding upon and attacking networks, Linksys does not warrant that the Product will be free of vulnerability to intrusion or attack.

TO THE EXTENT NOT PROHIBITED BY LAW, IN NO EVENT WILL LINKSYS BE LIABLE FOR ANY LOST DATA, REVENUE OR PROFIT, OR FOR SPECIAL, INDIRECT, CONSEQUENTIAL, INCIDENTAL OR PUNITIVE DAMAGES, REGARDLESS OF THE THEORY OF LIABILITY (INCLUDING NEGLIGENCE), ARISING OUT OF OR RELATED TO THE USE OF OR INABILITY TO USE THE PRODUCT (INCLUDING ANY SOFTWARE), EVEN IF LINKSYS HAS BEEN ADVISED OF THE POSSIBILITY OF SUCH DAMAGES. IN NO EVENT WILL LINKSYS' LIABILITY EXCEED THE AMOUNT PAID BY YOU FOR THE PRODUCT. The foregoing limitations will apply even if any warranty or remedy provided under this Agreement fails of its essential purpose. Some jurisdictions do not allow the exclusion or limitation of incidental or consequential damages, so the above limitation or exclusion may not apply to You.

This Warranty is valid and may be processed only in the country of purchase.

Please direct all inquiries to: Linksys, P.O. Box 18558, Irvine, CA 92623 USA.

Appendix H: Regulatory Information

Federal Communication Commission Interference Statement

This equipment has been tested and found to comply with the limits for a Class B digital device, pursuant to Part 15 of the FCC Rules. These limits are designed to provide reasonable protection against harmful interference in a residential installation. This equipment generates, uses and can radiate radio frequency energy and, if not installed and used in accordance with the instructions, may cause harmful interference to radio communications. However, there is no guarantee that interference will not occur in a particular installation. If this equipment does cause harmful interference to radio or television reception, which can be determined by turning the equipment off and on, the user is encouraged to try to correct the interference by one of the following measures:

- Reorient or relocate the receiving antenna.
- Increase the separation between the equipment and receiver.
- Connect the equipment into an outlet on a circuit different from that to which the receiver is connected.
- Consult the dealer or an experienced radio/TV technician for help.

This device complies with Part 15 of the FCC Rules. Operation is subject to the following two conditions: (1) This device may not cause harmful interference, and (2) this device must accept any interference received, including interference that may cause undesired operation.

FCC Caution: Any changes or modifications not expressly approved by the party responsible for compliance could void the user's authority to operate this equipment.

IMPORTANT NOTE: FCC Radiation Exposure Statement

This equipment complies with FCC radiation exposure limits set forth for an uncontrolled environment. This equipment should be installed and operated with minimum distance 20cm between the radiator & your body. To maintain compliance with FCC RF exposure compliance requirements, please avoid direct contact to the transmitting antenna during transmitting.

This transmitter must not be co-located or operating in conjunction with any other antenna or transmitter.

We declare that the product is limited in CH1~CH11 by specified firmware controlled in the USA.

Wireless-G Bridge for Phone Adapters

Safety Notices

Caution: To reduce the risk of fire, use only No.26 AWG or larger telecommunication line cord.

Do not use this product near water, for example, in a wet basement or near a swimming pool.

Avoid using this product during an electrical storm. There may be a remote risk of electric shock from lightning.

Industry Canada

The use of this device in a system operating either partially or completely outdoors may require the user to obtain a license for the system according to the Canadian regulations.

This device complies with Industry Canada ICES-003 and RSS210 rules.

IC Statement

Operation is subject to the following two conditions:

1. This device may not cause interference and
2. This device must accept any interference, including interference that may cause undesired operation of the device.

Industrie Canada

L'utilisation de ce périphérique dans un système utilisé partiellement ou totalement en extérieur peut conduire l'utilisateur à l'obtention d'une licence pour ce système conformément aux règles en vigueur au Canada.

Cet appareil est conforme aux normes NMB-003 et RSS210 d'Industrie Canada.

Déclaration d'Industrie Canada

Le fonctionnement est soumis aux conditions suivantes :

1. Ce périphérique ne doit pas causer d'interférences;
2. Ce périphérique doit accepter toutes les interférences reçues, y compris celles qui risquent d'entraîner un fonctionnement indésirable.

Wireless-G Bridge for Phone Adapters

Compliance Information for 2.4-GHz Wireless Products Relevant to the EU and Other Countries Following the EU Directive 1999/5/EC (R&TTE Directive)

Declaration of Conformity with Regard to the EU Directive 1999/5/EC (R&TTE Directive)

Česky [Czech]:	Toto zařízení je v souladu se základními požadavky a ostatními odpovídajícími ustanoveními Směrnice 1999/5/EC.
Dansk [Danish]:	Dette udstyr er i overensstemmelse med de væsentlige krav og andre relevante bestemmelser i Direktiv 1999/5/EF.
Deutsch [German]:	Dieses Gerät entspricht den grundlegenden Anforderungen und den weiteren entsprechenden Vorgaben der Richtlinie 1999/5/EU.
Eesti [Estonian]:	See seade vastab direktiivi 1999/5/EÜ olulistele nõuetele ja teistele asjakohastele sätetele.
English:	This equipment is in compliance with the essential requirements and other relevant provisions of Directive 1999/5/EC.
Español [Spanish]:	Este equipo cumple con los requisitos esenciales así como con otras disposiciones de la Directiva 1999/5/CE.
Ελληνική [Greek]:	Αυτός ο εξοπλισμός είναι σε συμμόρφωση με τις ουσιαστικές απαιτήσεις και άλλες σχετικές διατάξεις της Οδηγίας 1999/5/EC.
Français [French]:	Cet appareil est conforme aux exigences essentielles et aux autres dispositions pertinentes de la Directive 1999/5/EC.
Íslenska [Icelandic]:	Þetta tæki er samkvæmt grunnkröfum og öðrum viðeigandi ákvæðum Tilskipunar 1999/5/EC.
Italiano [Italian]:	Questo apparato é conforme ai requisiti essenziali ed agli altri principi sanciti dalla Direttiva 1999/5/CE.
Latviski [Latvian]:	Šī iekārta atbilst Direktīvas 1999/5/EK būtiskajām prasībām un citiem ar to saistītajiem noteikumiem.
Lietuvių [Lithuanian]:	Šis įrenginys tenkina 1999/5/EB Direktyvos esminius reikalavimus ir kitas šios direktyvos nuostatas.
Nederlands [Dutch]:	Dit apparaat voldoet aan de essentiële eisen en andere van toepassing zijnde bepalingen van de Richtlijn 1999/5/EC.
Malti [Maltese]:	Dan l-apparat huwa konformi mal-htigiet essenzjali u l-provedimenti l-oħra rilevanti tad-Direttiva 1999/5/EC.
Margyar [Hungarian]:	Ez a készülék teljesíti az alapvető követelményeket és más 1999/5/EK irányelvben meghatározott vonatkozó rendelkezéseket.
Norsk [Norwegian]:	Dette utstyret er i samsvar med de grunnleggende krav og andre relevante bestemmelser i EU-direktiv 1999/5/EF.
Polski [Polish]:	Urządzenie jest zgodne z ogólnymi wymaganiami oraz szczególnymi warunkami określonymi Dyrektywą UE: 1999/5/EC.
Português [Portuguese]:	Este equipamento está em conformidade com os requisitos essenciais e outras provisões relevantes da Directiva 1999/5/EC.
Română [Romanian]:	Acest echipament este în conformitate cu cerințele esențiale și cu alte prevederi relevante ale Directivei 1999/5/EC.
Slovensko [Slovenian]:	Ta naprava je skladna z bistvenimi zahtevami in ostalimi relevantnimi pogoji Direktive 1999/5/EC.
Slovensky [Slovak]:	Toto zariadenie je v zhode so základnými požiadavkami a inými príslušnými nariadeniami direktív: 1999/5/EC.
Suomi [Finnish]:	Tämä laite täyttää direktiivin 1999/5/EY olennaiset vaatimukset ja on siinä asetettujen muiden laitetta koskevien määräysten mukainen.
Svenska [Swedish]:	Denna utrustning är i överensstämmelse med de väsentliga kraven och andra relevanta bestämmelser i Direktiv 1999/5/EC.

NOTE: For all products, the Declaration of Conformity is available through one or more of these options:

- A pdf file is included on the product's CD.
- A print copy is included with the product.
- A pdf file is available on the product's webpage. Visit www.linksys.com/international and select your country or region. Then select your product.

If you need any other technical documentation, see the "Technical Documents on www.linksys.com/international" section, as shown later in this appendix.

The following standards were applied during the assessment of the product against the requirements of the Directive 1999/5/EC:

- Radio: EN 300 328
- EMC: EN 301 489-1, EN 301 489-17
- Safety: EN 60950 and either EN 50385 or EN 50371

CE Marking

For the Linksys Wireless-B and Wireless-G products, the following CE mark, notified body number (where applicable), and class 2 identifier are added to the equipment.



Check the CE label on the product to find out which notified body was involved during the assessment.

National Restrictions

This product may be used in all EU countries (and other countries following the EU directive 1999/5/EC) without any limitation except for the countries mentioned below:

Ce produit peut être utilisé dans tous les pays de l'UE (et dans tous les pays ayant transposés la directive 1999/5/CE) sans aucune limitation, excepté pour les pays mentionnés ci-dessous:

Questo prodotto è utilizzabile in tutte i paesi EU (ed in tutti gli altri paesi che seguono le direttive EU 1999/5/EC) senza nessuna limitazione, eccetto per i paesi menzionati di seguito:

Das Produkt kann in allen EU Staaten ohne Einschränkungen eingesetzt werden (sowie in anderen Staaten die der EU Direktive 1999/5/CE folgen) mit Ausnahme der folgenden aufgeführten Staaten:

Wireless-G Bridge for Phone Adapters

Belgium

The Belgian Institute for Postal Services and Telecommunications (BIPT) must be notified of any outdoor wireless link having a range exceeding 300 meters. Please check <http://www.bipt.be> for more details.

Draadloze verbindingen voor buitengebruik en met een reikwijdte van meer dan 300 meter dienen aangemeld te worden bij het Belgisch Instituut voor postdiensten en telecommunicatie (BIPT). Zie <http://www.bipt.be> voor meer gegevens.

Les liaisons sans fil pour une utilisation en extérieur d'une distance supérieure à 300 mètres doivent être notifiées à l'Institut Belge des services Postaux et des Télécommunications (IBPT). Visitez <http://www.ibpt.be> pour de plus amples détails.

France

In case the product is used outdoors, the output power is restricted in some parts of the band. See Table 1 or check <http://www.arcep.fr/> for more details.

Dans la cas d'une utilisation en extérieur, la puissance de sortie est limitée pour certaines parties de la bande. Reportez-vous à la table 1 ou visitez <http://www.arcep.fr/> pour de plus amples détails.

Table 1: Applicable Power Levels in France

Location	Frequency Range (MHz)	Power (EIRP)
Indoor (No restrictions)	2400-2483.5	100 mW (20 dBm)
Outdoor	2400-2454 2454-2483.5	100 mW (20 dBm) 10 mW (10 dBm)

Italy

This product meets the National Radio Interface and the requirements specified in the National Frequency Allocation Table for Italy. Unless operating within the boundaries of the owner's property, the use of this 2.4 GHz Wireless LAN product requires a 'general authorization'. Please check with <http://www.comunicazioni.it/it/> for more details.

Questo prodotto è conforme alla specifiche di Interfaccia Radio Nazionali e rispetta il Piano Nazionale di ripartizione delle frequenze in Italia. Se non viene installato all'interno del proprio fondo, l'utilizzo di prodotti Wireless LAN a 2.4 GHz richiede una "Autorizzazione Generale". Consultare <http://www.comunicazioni.it/it/> per maggiori dettagli.

Wireless-G Bridge for Phone Adapters

Product Usage Restrictions

This product is designed for indoor usage only. Outdoor usage is not recommended.

This product is designed for use with the standard, integral or dedicated (external) antenna(s) that is/are shipped together with the equipment. However, some applications may require the antenna(s), if removable, to be separated from the product and installed remotely from the device by using extension cables. For these applications, Linksys offers an R-SMA extension cable (AC9SMA) and an R-TNC extension cable (AC9TNC). Both of these cables are 9 meters long and have a cable loss (attenuation) of 5 dB. To compensate for the attenuation, Linksys also offers higher gain antennas, the HGA7S (with R-SMA connector) and HGA7T (with R-TNC connector). These antennas have a gain of 7 dBi and may only be used with either the R-SMA or R-TNC extension cable.

Combinations of extension cables and antennas resulting in a radiated power level exceeding 100 mW EIRP are illegal.

Power Output of Your Device

To comply with your country's regulations, you may have to change the power output of your wireless device. Proceed to the appropriate section for your device.

NOTE: The power output setting may not be available on all wireless products. For more information, refer to the documentation on your product's CD or <http://www.linksys.com/international>.

Wireless Adapters

Wireless adapters have the power output set to 100% by default. Maximum power output on each adapter does not exceed 20 dBm (100 mW); it is generally 18 dBm (64 mW) or below. If you need to alter your wireless adapter's power output, follow the appropriate instructions for your computer's Windows operating system:

Windows XP

3. Double-click the **Wireless** icon in your desktop's system tray.
4. Open the *Wireless Network Connection* window.
5. Click the **Properties** button.
6. Select the **General** tab, and click the **Configure** button.
7. In the *Properties* window, click the **Advanced** tab.
8. Select **Power Output**.
9. From the pull-down menu on the right, select the wireless adapter's power output percentage.

Wireless-G Bridge for Phone Adapters

Windows 2000

1. Open the **Control Panel**.
2. Double-click **Network and Dial-Up Connections**.
3. Select your current wireless connection, and select **Properties**.
4. From the *Properties* screen, click the **Configure** button.
5. Click the **Advanced** tab, and select **Power Output**.
6. From the pull-down menu on the right, select the wireless adapter's power setting.

If your computer is running Windows Millennium or 98, then refer to Windows Help for instructions on how to access the advanced settings of a network adapter.

Wireless Access Points, Routers, or Other Wireless Products

If you have a wireless access point, router or other wireless product, use its Web-based Utility to configure its power output setting (refer to the product's documentation for more information).

Technical Documents on www.linksys.com/international

Follow these steps to access technical documents:

1. Enter <http://www.linksys.com/international> in your web browser.
2. Select the country or region in which you live.
3. Click the Products tab.
4. Select the appropriate product category.
5. Select the product sub-category, if necessary.
6. Select the product.
7. Select the type of documentation you want from the More Information section. The document will open in PDF format if you have Adobe Acrobat installed on your computer.

NOTE: If you have questions regarding the compliance of these products or you cannot find the information you need, please contact your local sales office or visit <http://www.linksys.com/international> for more details.

User Information for Consumer Products Covered by EU Directive 2002/96/EC on Waste Electric and Electronic Equipment (WEEE)

This document contains important information for users with regards to the proper disposal and recycling of Linksys products. Consumers are required to comply with this notice for all electronic products bearing the following symbol:

English

Environmental Information for Customers in the European Union

European Directive 2002/96/EC requires that the equipment bearing this symbol on the product and/or its packaging must not be disposed of with unsorted municipal waste. The symbol indicates that this product should be disposed of separately from regular household waste streams. It is your responsibility to dispose of this and other electric and electronic equipment via designated collection facilities appointed by the government or local authorities. Correct disposal and recycling will help prevent potential negative consequences to the environment and human health. For more detailed information about the disposal of your old equipment, please contact your local authorities, waste disposal service, or the shop where you purchased the product.

Ceština/Czech

Informace o ochraně životního prostředí pro zákazníky v zemích Evropské unie

Evropská směrnice 2002/96/ES zakazuje, aby zařízení označené tímto symbolem na produktu anebo na obalu bylo likvidováno s netříděným komunálním odpadem. Tento symbol udává, že daný produkt musí být likvidován odděleně od běžného komunálního odpadu. Odpovídáte za likvidaci tohoto produktu a dalších elektrických a elektronických zařízení prostřednictvím určených sběrných míst stanovených vládou nebo místními úřady. Správná likvidace a recyklace pomáhá předcházet potenciálním negativním dopadům na životní prostředí a lidské zdraví. Podrobnější informace o likvidaci starého vybavení si laskavě vyžádejte od místních úřadů, podniku zabývajícího se likvidací komunálních odpadů nebo obchodu, kde jste produkt zakoupili.



Dansk/Danish

Miljøinformation for kunder i EU

EU-direktiv 2002/96/EF kræver, at udstyr der bærer dette symbol på produktet og/eller emballagen ikke må bortskaffes som usorteret kommunalt affald. Symbolet betyder, at dette produkt skal bortskaffes adskilt fra det almindelige husholdningsaffald. Det er dit ansvar at bortskaffe dette og andet elektrisk og elektronisk udstyr via bestemte indsamlingssteder udpeget af staten eller de lokale myndigheder. Korrekt bortskaffelse og genvinding vil hjælpe med til at undgå mulige skader for miljøet og menneskers sundhed. Kontakt venligst de lokale myndigheder, renovationstjenesten eller den butik, hvor du har købt produktet, angående mere detaljeret information om bortskaffelse af dit gamle udstyr.

Deutsch/German

Umweltinformation für Kunden innerhalb der Europäischen Union

Die Europäische Richtlinie 2002/96/EC verlangt, dass technische Ausrüstung, die direkt am Gerät und/oder an der Verpackung mit diesem Symbol versehen ist nicht zusammen mit unsortiertem Gemeindeabfall entsorgt werden darf. Das Symbol weist darauf hin, dass das Produkt von regulärem Haushaltsmüll getrennt entsorgt werden sollte. Es liegt in Ihrer Verantwortung, dieses Gerät und andere elektrische und elektronische Geräte über die dafür zuständigen und von der Regierung oder örtlichen Behörden dazu bestimmten Sammelstellen zu entsorgen. Ordnungsgemäßes Entsorgen und Recyceln trägt dazu bei, potentielle negative Folgen für Umwelt und die menschliche Gesundheit zu vermeiden. Wenn Sie weitere Informationen zur Entsorgung Ihrer Altgeräte benötigen, wenden Sie sich bitte an die örtlichen Behörden oder städtischen Entsorgungsdienste oder an den Händler, bei dem Sie das Produkt erworben haben.

Eesti/Estonian

Keskkonnaalane informatsioon Euroopa Liidus asuvatele klientidele

Euroopa Liidu direktiivi 2002/96/EÜ nõuete kohaselt on seadmeid, millel on tootel või pakendil käesolev sümbol, keelatud kõrvaldada koos sorteerimata olmejäätmetega. See sümbol näitab, et toode tuleks kõrvaldada eraldi tavalistest olmejäätmevoogudest. Olete kohustatud kõrvaldama käesoleva ja ka muud elektri- ja elektroonikaseadmed riigi või kohalike ametiasutuste poolt ette nähtud kogumispunktide kaudu. Seadmete korrektne kõrvaldamine ja ringlussevõtt aitab vältida võimalikke negatiivseid tagajärgi keskkonnale ning inimeste tervisele. Vanade seadmete kõrvaldamise kohta täpsema informatsiooni saamiseks võtke palun ühendust kohalike ametiasutustega, jäätmekäitlusfirmaga või kauplusega, kust te toote ostsite.

Español/Spanish

Información medioambiental para clientes de la Unión Europea

La Directiva 2002/96/CE de la UE exige que los equipos que lleven este símbolo en el propio aparato y/o en su embalaje no deben eliminarse junto con otros residuos urbanos no seleccionados. El símbolo indica que el producto en cuestión debe separarse de los residuos domésticos convencionales con vistas a su eliminación. Es responsabilidad suya desechar este y cualesquiera otros aparatos eléctricos y electrónicos a través de los puntos de recogida que ponen a su disposición el gobierno y las autoridades locales. Al desechar y reciclar correctamente estos aparatos estará contribuyendo a evitar posibles consecuencias negativas para el medio ambiente y la salud de las personas. Si desea obtener información más detallada sobre la eliminación segura de su aparato usado, consulte a las autoridades locales, al servicio de recogida y eliminación de residuos de su zona o pregunte en la tienda donde adquirió el producto.

Ελληνικά/Greek

Στοιχεία περιβαλλοντικής προστασίας για πελάτες εντός της Ευρωπαϊκής Ένωσης

Η Κοινοτική Οδηγία 2002/96/EC απαιτεί ότι ο εξοπλισμός ο οποίος φέρει αυτό το σύμβολο στο προϊόν και/ή στη συσκευασία του δεν πρέπει να απορρίπτεται μαζί με τα μικτά κοινотικά απορρίμματα. Το σύμβολο υποδεικνύει ότι αυτό το προϊόν θα πρέπει να απορρίπτεται ξεχωριστά από τα συνήθη οικιακά απορρίμματα. Είστε υπεύθυνος για την απόρριψη του παρόντος και άλλου ηλεκτρικού και ηλεκτρονικού εξοπλισμού μέσω των καθορισμένων εγκαταστάσεων συγκέντρωσης απορριμμάτων οι οποίες παρέχονται από το κράτος ή τις αρμόδιες τοπικές αρχές. Η σωστή απόρριψη και ανακύκλωση συμβάλλει στην πρόληψη πιθανών αρνητικών συνεπειών για το περιβάλλον και την υγεία. Για περισσότερες πληροφορίες σχετικά με την απόρριψη του παλιού σας εξοπλισμού, παρακαλώ επικοινωνήστε με τις τοπικές αρχές, τις υπηρεσίες απόρριψης ή το κατάστημα από το οποίο αγοράσατε το προϊόν.

Français/French

Informations environnementales pour les clients de l'Union européenne

La directive européenne 2002/96/CE exige que l'équipement sur lequel est apposé ce symbole sur le produit et/ou son emballage ne soit pas jeté avec les autres ordures ménagères. Ce symbole indique que le produit doit être éliminé dans un circuit distinct de celui pour les déchets des ménages. Il est de votre responsabilité de jeter ce matériel ainsi que tout autre matériel électrique ou électronique par les moyens de collecte indiqués par le gouvernement et les pouvoirs publics des collectivités territoriales. L'élimination et le recyclage en bonne et due forme ont pour but de lutter contre l'impact néfaste potentiel de ce type de produits sur l'environnement et la santé publique. Pour plus d'informations sur le mode d'élimination de votre ancien équipement, veuillez prendre contact avec les pouvoirs publics locaux, le service de traitement des déchets, ou l'endroit où vous avez acheté le produit.

Italiano/Italian

Informazioni relative all'ambiente per i clienti residenti nell'Unione Europea

La direttiva europea 2002/96/EC richiede che le apparecchiature contrassegnate con questo simbolo sul prodotto e/o sull'imballaggio non siano smaltite insieme ai rifiuti urbani non differenziati. Il simbolo indica che questo prodotto non deve essere smaltito insieme ai normali rifiuti domestici. È responsabilità del proprietario smaltire sia questi prodotti sia le altre apparecchiature elettriche ed elettroniche mediante le specifiche strutture di raccolta indicate dal governo o dagli enti pubblici locali. Il corretto smaltimento ed il riciclaggio aiuteranno a prevenire conseguenze potenzialmente negative per l'ambiente e per la salute dell'essere umano. Per ricevere informazioni più dettagliate circa lo smaltimento delle vecchie apparecchiature in Vostro possesso, Vi invitiamo a contattare gli enti pubblici di competenza, il servizio di smaltimento rifiuti o il negozio nel quale avete acquistato il prodotto.

Latviešu valoda/Latvian

Ekoloģiska informācija klientiem Eiropas Savienības jurisdikcijā

Direktīvā 2002/96/EK ir prasība, ka aprīkojumu, kam pievienota zīme uz paša izstrādājuma vai uz tā iesaiņojuma, nedrīkst izmest nešķīrotā veidā kopā ar komunālajiem atkritumiem (tiem, ko rada vietēji iedzīvotāji un uzņēmumi). Šī zīme nozīmē to, ka šī ierīce ir jāizmet atkritumos tā, lai tā nenonāktu kopā ar parastiem mājtsaimniecības atkritumiem. Jūsu pienākums ir šo un citas elektriskas un elektroniskas ierīces izmest atkritumos, izmantojot īpašus atkritumu savākšanas veidus un līdzekļus, ko nodrošina valsts un pašvaldību iestādes. Ja izmešana atkritumos un pārstrāde tiek veikta pareizi, tad mazinās iespējamais kaitējums dabai un cilvēku veselībai. Sīkākas ziņas par novecojušu aprīkojuma izmešanu atkritumos jūs varat saņemt vietējā pašvaldībā, atkritumu savākšanas dienestā, kā arī veikalā, kur iegādājāties šo izstrādājumu.

Lietuvškai/Lithuanian

Aplinkosaugos informacija, skirta Europos Sąjungos vartotojams

Europos direktyva 2002/96/EC numato, kad įrangos, kuri ir (arba) kurios pakuotė yra pažymėta šiuo simboliu, negalima šalinti kartu su nerūšiuotomis komunalinėmis atliekomis. Šis simbolis rodo, kad gaminį reikia šalinti atskirai nuo bendro buitinių atliekų srauto. Jūs privalote užtikrinti, kad ši ir kita elektros ar elektroninė įranga būtų šalinama per tam tikras nacionalinės ar vietinės valdžios nustatytas atliekų rinkimo sistemas. Tinkamai šalinant ir perdurbant atliekas, bus išvengta galimos žalos aplinkai ir žmonių sveikatai. Daugiau informacijos apie jūsų senos įrangos šalinimą gali pateikti vietinės valdžios institucijos, atliekų šalinimo tarnybos arba parduotuvės, kuriose įsigijote tą gaminį.

Malti/Maltese

Informazzjoni Ambjentali għal Kliġenti fl-Unjoni Ewropea

Id-Direttiva Ewropea 2002/96/KE titlob li t-tagħmir li jkun fih is-simbolu fuq il-prodott u/jew fuq l-ippakkjar ma jistax jintrema ma' skart municiġpali li ma għiex isseparat. Is-simbolu jindika li dan il-prodott għandu jintrema separatament minn ma' l-iskart domestiku regolari. Hija responsabbiltà tiegħek li tarmi dan it-tagħmir u kull tagħmir iehor ta' l-elettriku u elettroniku permezz ta' faċilitajiet ta' għbir appuntati apposta mill-gvern jew mill-awtoritajiet lokali. Ir-rimi b'mod korrett u r-riciklagg jghin jipprevjeni konsegwenzi negattivi potenzjali għall-ambjent u għas-saħħa tal-bniedem. Għal aktar informazzjoni dettaljata dwar ir-rimi tat-tagħmir antik tiegħek, jekk jogħġbok ikkuntattja lill-awtoritajiet lokali tiegħek, is-servizzi għar-rimi ta' l-iskart, jew il-hanut minn fejn xtrajt il-prodott.

Magyar/Hungarian

Környezetvédelmi információ az európai uniós vásárlók számára

A 2002/96/EC számú európai uniós irányelv megkívánja, hogy azokat a termékeket, amelyekben, és/vagy amelyek csomagolásán az alábbi címke megjelenik, tilos a többi szelektálatlan lakossági hulladékkal együtt kidobni. A címke azt jelöli, hogy az adott termék kidobásakor a szokványos háztartási hulladékelszállítási rendszerektől elkülönített eljárást kell alkalmazni. Az Ön felelőssége, hogy ezt, és más elektromos és elektronikus berendezéseit a kormányzati vagy a helyi hatóságok által kijelölt gyűjtőrendszeren keresztül számolja fel. A megfelelő hulladékfeldolgozás segít a környezetre és az emberi egészségre potenciálisan ártalmas negatív hatások megelőzésében. Ha elavult berendezéseinek felszámolásához további részletes információra van szüksége, kérjük, lépjen kapcsolatba a helyi hatóságokkal, a hulladékfeldolgozási szolgálattal, vagy azzal üzlettel, ahol a terméket vásárolta.

Nederlands/Dutch

Milieu-informatie voor klanten in de Europese Unie

De Europese Richtlijn 2002/96/EC schrijft voor dat apparatuur die is voorzien van dit symbool op het product of de verpakking, niet mag worden ingezameld met niet-gescheiden huishoudelijk afval. Dit symbool geeft aan dat het product apart moet worden ingezameld. U bent zelf verantwoordelijk voor de vernietiging van deze en andere elektrische en elektronische apparatuur via de daarvoor door de landelijke of plaatselijke overheid aangewezen inzamelingskanalen. De juiste vernietiging en recycling van deze apparatuur voorkomt mogelijke negatieve gevolgen voor het milieu en de gezondheid. Voor meer informatie over het vernietigen van uw oude apparatuur neemt u contact op met de plaatselijke autoriteiten of afvalverwerkingsdienst, of met de winkel waar u het product hebt aangeschaft.

Norsk/Norwegian

Miljøinformasjon for kunder i EU

EU-direktiv 2002/96/EF krever at utstyr med følgende symbol avbildet på produktet og/eller pakningen, ikke må kastes sammen med usortert avfall. Symbolet indikerer at dette produktet skal håndteres atskilt fra ordinær avfallsinnsamling for husholdningsavfall. Det er ditt ansvar å kvitte deg med dette produktet og annet elektrisk og elektronisk avfall via egne innsamlingsordninger slik myndighetene eller kommunene bestemmer. Korrekt avfallshåndtering og gjenvinning vil være med på å forhindre mulige negative konsekvenser for miljø og helse. For nærmere informasjon om håndtering av det kasserte utstyret ditt, kan du ta kontakt med kommunen, en innsamlingsstasjon for avfall eller butikken der du kjøpte produktet.

Polski/Polish

Informacja dla klientów w Unii Europejskiej o przepisach dotyczących ochrony środowiska

Dyrektywa Europejska 2002/96/EC wymaga, aby sprzęt oznaczony symbolem znajdującym się na produkcie i/lub jego opakowaniu nie był wyrzucany razem z innymi niesortowanymi odpadami komunalnymi. Symbol ten wskazuje, że produkt nie powinien być usuwany razem ze zwykłymi odpadami z gospodarstw domowych. Na Państwu spoczywa obowiązek wyrzucania tego i innych urządzeń elektrycznych oraz elektronicznych w punktach odbioru wyznaczonych przez władze krajowe lub lokalne. Pozbywanie się sprzętu we właściwy sposób i jego recykling pomogą zapobiec potencjalnie negatywnym konsekwencjom dla środowiska i zdrowia ludzkiego. W celu uzyskania szczegółowych informacji o usuwaniu starego sprzętu, prosimy zwrócić się do lokalnych władz, służb oczyszczania miasta lub sklepu, w którym produkt został nabyty.

Português/Portuguese

Informação ambiental para clientes da União Europeia

A Directiva Europeia 2002/96/CE exige que o equipamento que exibe este símbolo no produto e/ou na sua embalagem não seja eliminado junto com os resíduos municipais não separados. O símbolo indica que este produto deve ser eliminado separadamente dos resíduos domésticos regulares. É da sua responsabilidade eliminar este e qualquer outro equipamento eléctrico e electrónico através dos instalações de recolha designadas pelas autoridades governamentais ou locais. A eliminação e reciclagem correctas ajudarão a prevenir as consequências negativas para o ambiente e para a saúde humana. Para obter informações mais detalhadas sobre a forma de eliminar o seu equipamento antigo, contacte as autoridades locais, os serviços de eliminação de resíduos ou o estabelecimento comercial onde adquiriu o produto.

Slovenčina/Slovak

Informácie o ochrane životného prostredia pre zákazníkov v Európskej únii

Podľa európskej smernice 2002/96/ES zariadenie s týmto symbolom na produkte a/alebo jeho balení nesmie byť likvidované spolu s netriedeným komunálnym odpadom. Symbol znamená, že produkt by sa mal likvidovať oddelene od bežného odpadu z domácností. Je vašou povinnosťou likvidovať toto i ostatné elektrické a elektronické zariadenia prostredníctvom špecializovaných zberných zariadení určených vládou alebo miestnymi orgánmi. Správna likvidácia a recyklácia pomôže zabrániť prípadným negatívnym dopadom na životné prostredie a zdravie ľudí. Ak máte záujem o podrobnejšie informácie o likvidácii starého zariadenia, obráťte sa, prosím, na miestne orgány, organizácie zaoberajúce sa likvidáciou odpadov alebo obchod, v ktorom ste si produkt zakúpili.

Slovenčina/Slovene

Okoljske informacije za stranke v Evropski uniji

Evropska direktiva 2002/96/EC prepoveduje odlaganje opreme, označene s tem simbolom – na izdelku in/ali na embalaži – med običajne, nerazvrščene odpadke. Ta simbol opozarja, da je treba izdelek odvreči ločeno od preostalih gospodinskih odpadkov. Vaša odgovornost je, da to in preostalo električno in elektronsko opremo odnesete na posebna zbirališča, ki jih določijo državne ustanove ali lokalna uprava. S pravilnim odlaganjem in recikliranjem boste preprečili morebitne škodljive vplive na okolje in zdravje ljudi. Če želite izvedeti več o odlaganju stare opreme, se obrnite na lokalno upravo, odpad ali trgovino, kjer ste izdelek kupili.

Suomi/Finnish

Ympäristöä koskevia tietoja EU-alueen asiakkaille

EU-direktiivi 2002/96/EY edellyttää, että jos laitteistossa on tämä symboli itse tuotteessa ja/tai sen pakkauksessa, laitteistoa ei saa hävittää lajittelemattoman yhdyskuntajätteen mukana. Symboli merkitsee sitä, että tämä tuote on hävitettävä erillään tavallisesta kotitalousjätteestä. Sinun vastuullasi on hävittää tämä elektroniikkatuote ja muut vastaavat elektroniikkatuotteet viemällä tuote tai tuotteet viranomaisten määräämään keräyspisteeseen. Laitteiston oikea hävittäminen estää mahdolliset kielteiset vaikutukset ympäristöön ja ihmisten terveyteen. Lisätietoja vanhan laitteiston oikeasta hävitystavasta saa paikallisilta viranomaisilta, jätteenhävityspalvelusta tai siitä myymälästä, josta ostit tuotteen.

Svenska/Swedish

Miljöinformation för kunder i Europeiska unionen

Det europeiska direktivet 2002/96/EC kräver att utrustning med denna symbol på produkten och/eller förpackningen inte får kastas med osorterat kommunalt avfall. Symbolen visar att denna produkt bör kastas efter att den avskiljts från vanligt hushållsavfall. Det faller på ditt ansvar att kasta denna och annan elektrisk och elektronisk utrustning på fastställda insamlingsplatser utsedda av regeringen eller lokala myndigheter. Korrekt kassering och återvinning skyddar mot eventuella negativa konsekvenser för miljön och personhälsa. För mer detaljerad information om kassering av din gamla utrustning kontaktar du dina lokala myndigheter, avfallshanteringen eller butiken där du köpte produkten.

For more information, visit www.linksys.com/international.

Appendix I: Contact Information

Need to contact Linksys?

Visit us online for information on the latest products and updates to your existing products at:
<http://www.linksys.com/international>

If you experience problems with any Linksys product, you can e-mail us at:

In Europe	E-mail Address
Austria	support.at@linksys.com
Belgium	support.be@linksys.com
Denmark	support.dk@linksys.com
France	support.fr@linksys.com
Germany	support.de@linksys.com
Italy	support.it@linksys.com
Netherlands	support.nl@linksys.com
Norway	support.no@linksys.com
Portugal	support.pt@linksys.com
Spain	support.es@linksys.com
Sweden	support.se@linksys.com
Switzerland	support.ch@linksys.com
United Kingdom & Ireland	support.uk@linksys.com

Outside of Europe	E-mail Address
Asia Pacific	asiасupport@linksys.com (English only)
Latin America	support.portuguese@linksys.com or support.spanish@linksys.com
Middle East & Africa	support.mea@linksys.com (English only)
U.S. and Canada	support@linksys.com